



# 2024 Belts and Accessories

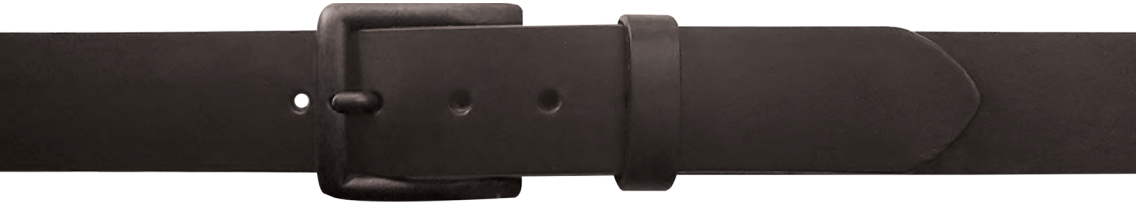
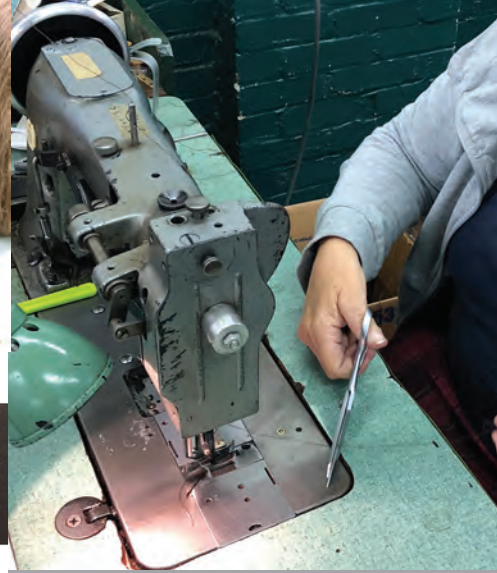


DANBURY



200 West Academy St., Madison, NC 27025 · Ph : 800-334-5101 or 336-548-9624 ·  
Fax : 336-427-7105 customerservice@gem-dandy.com www.gem-dandy.com





7169500

38 mm Genuine Leather  
with matte black finish buckle  
001 Black  
231 T - Moro  
Size : 32/46  
0038-0018



7171500

38 mm Genuine Leather  
with silver finish buckle  
001 Black  
200 Brown  
Size : 32/46  
0038-0018



7172500

38 mm Genuine Leather  
with silver finish buckle  
200 Brown  
Size : 32/46  
0038-0018



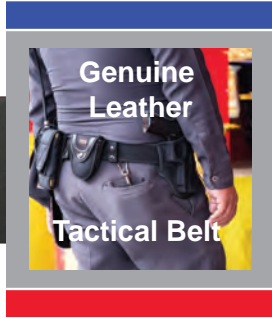
7173500

38 mm Genuine Leather  
with silver finish roller bar buckle  
001 Black  
200 Brown  
Size : 32/46  
0038-0018





We use 7 holes on point end to ensure a "Better Fit" for all body types.



Label to call out functionality

### Tactical / Holster Belt

7530500  
38 mm Genuine Leather  
Tactical Belt with roller bar buckle in  
silver finish  
001 Black  
Size : 32/46  
0040-0019



9568500  
38 mm American eagle embossed  
bridle leather with buckle in black  
matte finish  
-221 Rusty  
Sz. 32/46  
0039-1850



7178500  
38 mm Genuine  
American Bison Leather,  
three row stitch,  
buckle in antique nickel finish  
Color : 625 Hazelnut Bison  
730 Honey Bison  
0048-0023





Gem-Dandy Accessories is a wholesale distributor of belts and accessories servicing retailers across the globe since 1921. We are located in historic downtown Madison, North Carolina just steps from the Dan River. We have celebrated our 100th year anniversary in 2021, thanking all customers who stood by us during this past century. We appreciate your loyalty through the years.

Gem-Dandy entered the belt business during World War II. The Danbury name was registered as a brand name in the 1970's and sales expanded across the country into thousands of men's specialty shops.

Today, Gem-Dandy distributes a wide variety of belts, wallets, suspenders and other accessories in dress, casual, work wear and western styles. We are the proud licensor of several popular brands such as Greg Norman®, Pebble Beach®, John Deere®, Roper®, Berne®, Mossy Oak®, REALTREE®, Colours by Alexander Julian® and Stetson®.

We also have our own proprietary brands including Danbury Golf, Danbury Workwear, Lady Danbury, G-Bar-D Western Outfitters and Cowgirls Rock. Our products can be found in major department stores as well as smaller venues.

**Electronic Data Interchange (EDI) Capabilities :**  
Gem-Dandy Accessories is fully EDI capable, trading multiple documents with our trading partners via VAN services, FTP and AS2. We currently use VICS standards 4010 through 5030, customized to our customer's needs.

Our website at [gem-dandy.com](http://gem-dandy.com) is a fully integrated B2B site for direct order placement .

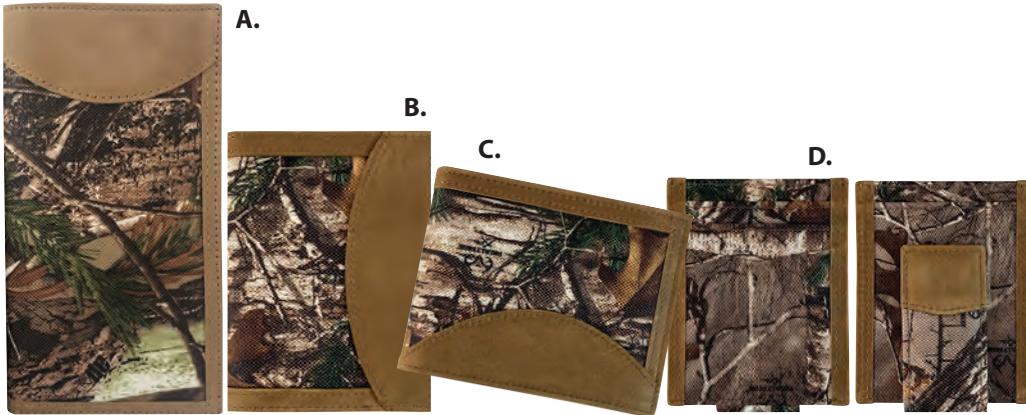
- 2 : Made in USA
- 3 : Made in USA/American Bison
- 4 : Index
- 5 : Wallets
- 6 : Danbury Casual
- 7 : Danbury Dress
- 8 : Danbury Workwear
- 9 : Danbury Workwear
- 10 : Big & Tall
- 11 : Big & Tall / Suspenders
- 12 : Danbury Ladies
- 13 : Danbury Ladies
- 14 : Camo : Realtree / Strata
- 15 : Camo True Timber / Kanati
- 16 : In-Store Displays



Scan to go to our fully operational B2B website.



# WALLETS



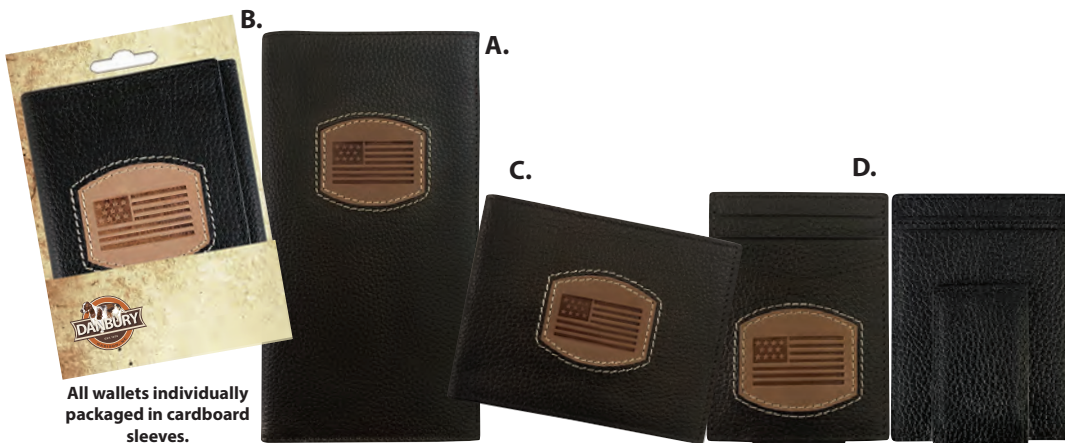
(A) 9001003 (**checkbook**) 0027-1250  
 (B) 9001001 (**trifold**) 0024-0011  
 (C) 9001002 (**pass case**) 0024-0011  
 (D) 9001004 (**magnetic money clip**)  
 0027-1250  
 Crazy horse leather trim with  
 Realtree canvas  
 200 BROWN



(A) 9002003 (**checkbook**) 0035-1650  
 (B) 9002001 (**trifold**) 0029-1325  
 (C) 9002002 (**pass case**) 0027-1225  
 (D) 9002004 (**magnetic money clip**)  
 0026-0012  
 Genuine crunch leather  
 200 BROWN



(A) 9004003 (**checkbook**) 0032-0015  
 (B) 9004001 (**trifold**) 0027-1250  
 (C) 9004002 (**pass case**) 0025-1150  
 (D) 9004004 (**magnetic money clip**)  
 0025-1150  
 Crazy horse leather with heavy  
 contrast stitch  
 200 BROWN



(A) 9005003 (**checkbook**) 0032-0015  
 (B) 9005001 (**trifold**) 0027-1250  
 (C) 9005002 (**pass case**) 0025-1150  
 (D) 9005004 (**magnetic money clip**)  
 0025-1150  
 Pebble Grain Leather with USA flag  
 embossed on leather patch  
 001 Black

All wallets individually  
 packaged in cardboard  
 sleeves.



DANBURY

# CASUAL Belts

7 Holes for better fit

5562500  
Sz. 32/46  
-200 Brown  
38MM Genuine leather,  
edged with cord laces,  
buckle in antique nickel  
finish  
0037-1750



6600500  
Sz. 32/44  
-903 Brown/Khaki  
-979 Brown/Black  
35MM Top grain leather  
end tabs, elastic web strap,  
buckle in silver finish  
0035-1650



7174510  
Sz. 32/46  
-200 Brown  
38MM Genuine leather  
with burnished edges,  
buckle in gunmetal finish  
0031-1450



7182500  
Sz. 32/44  
-204 Dark Brown  
35MM Crazy Horse  
genuine leather,  
buckle in silver finish  
0033-1550



7183500  
Sz. 32/46  
-204 Dark Brown  
38MM genuine leather,  
roller bar buckle in silver  
finish  
0037-1750



7184500  
Sz. 32/46  
-200 Brown  
38MM Bridle leather,  
black creased edges,  
buckle in black matte finish.  
0033-1550



**NEW**

7185500  
Sz. 32/46  
-200 Brown  
35MM Vintage distressed  
leather, buckle in antique  
nickel finish  
0030-0014



We use 7 holes on point end to ensure a "Better Fit" for all body types.



# DRESS Belts

7 Holes for better fit

2349500  
Sz. 32/44  
-001 Black  
-210 Tan  
35MM Stretch elastic braid with bonded lacing, genuine leather end tabs, satin nickel finish buckle  
0038-0018



2488500  
Sz. 26/44  
-001 Black  
30MM Genuine leather, feathered edges with single tonal stitching, gold finish buckle  
0036-0017



2857500  
Sz. 34/44  
-200 Brown  
-001 Black  
35MM Genuine leather, buckle silver finish  
0032-0015



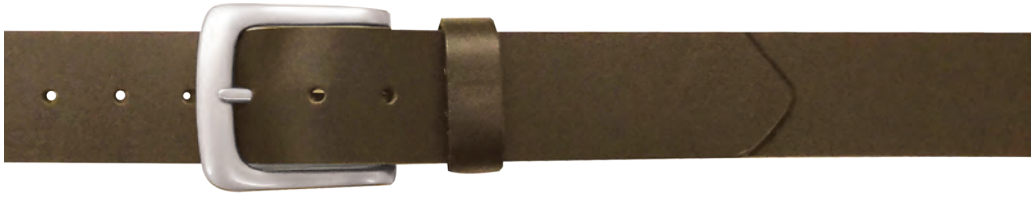
7142500  
Sz. 32/46  
-979 Brown/Black  
35MM Reversible genuine leather, buckle/loop in silver finish  
0034-0016







# WORKWEAR Belts

**2950500**

38MM Genuine leather

- non-stitched edges
- buckle in dull silver finish

SIZE 32/46

001 Black

200 Brown

0032-0016

**5548500**

38MM Top grain leather

- dull nickel finish buckle

SIZE 32/46

001 Black

200 Brown

0037-1850

**5559500**

35MM Top grain leather

- creased and stitched
- polished antique nickel finish buckle

SIZE 32/44

200 Brown

001 Black

0036-0018

**5711500**

38MM Genuine leather

- stitched edges
- double prong roller bar buckle in dull nickel finish

SIZE 32/46

200 Brown

001 Black

0035-1750

**5995510**

38MM Buffalo leather

- non-stitched edges
- dull nickel finish buckle

SIZE 32/44

001 Black

200 Brown

0037-1850

**7123510**

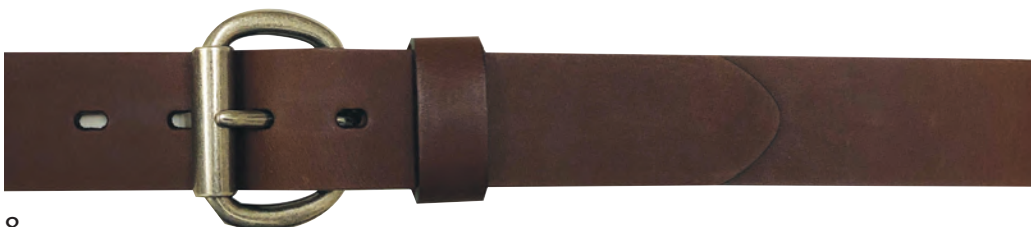
38MM Genuine leather

- creased edges
- buckle in silver finish

SIZE 32/44

200 Brown

0033-1650

**7176500**

38MM Genuine leather

- no stitch
- roller buckle in antique nickel finish

SIZE 32/44

200 Brown, 001 Black

0030-0015







**7179500**

38MM Distressed genuine leather,

- lightly sanded non-stitched edges,
- buckle in copper black matte finish

SIZE 32/46

001 Black

200 Brown

0030-0015



**NEW**

**7186500**

38MM Bovine leather

- single contrast stitched feathered edges
- buckle in antique nickel finish

SIZE 32/46

200 Brown

0034-0017



**NEW**

**7187500**

38MM Genuine leather

- basket weave embossing
- roller bar buckle in dull Old English brass finish

SIZE 32/46

200 Brown

0028-0014



**9501500**

38MM Top grain ostrich print with matching tabs

- silver finish buckle

Size 32/46

001 Black

0041-2050



**9544500**

38MM Genuine leather

- crackle textured two-toned effect
- black matte finish buckle

SIZE 32/46

204 Dark Brown

0029-1450



# Big & Tall Belts

7 Holes for better fit

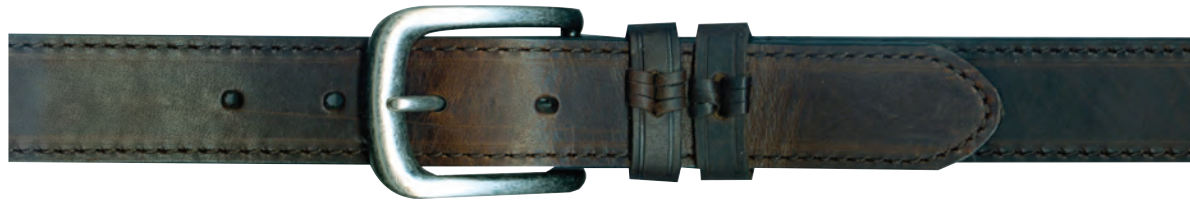
2349600  
Sz. 46/60  
-001 Black -210 Tan;  
35MM Stretch elastic braid,  
silver finish buckle.  
0043-2050



2488600  
Sz. 46/60  
-001 Black  
30MM Genuine leather,  
Gold finish buckle.  
0041-1950



5559600  
Sz. 46/56  
-001 Black -200 Brown;  
35MM Top grain leather,  
polished antique  
nickel finish buckle.  
0043-2050



5711600  
Sz. 48/60  
-001 Black -200 Brown;  
38MM Genuine leather, double  
prong roller bar buckle in dull  
nickel finish.  
0043-2050



5801600  
Sz. 52 and 58 only  
-390 Kanati  
38MM width, canvas True  
Timber Kanati Mini topside,  
stitched edges, buckle in  
dull dark antique brass finish.  
0033-1550

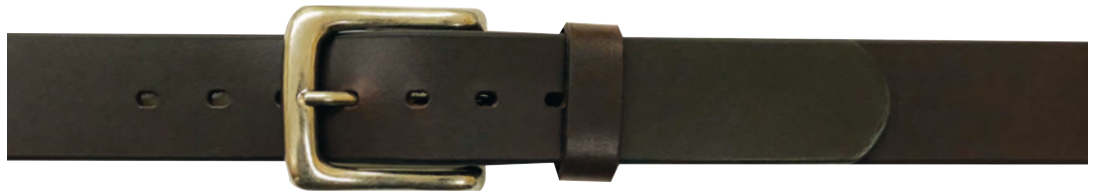


5801600  
Sz. 52 and 58 only  
-393 Strata  
38MM width, canvas True  
Timber Strata topside, stitched  
edges, buckle in dull dark  
antique brass finish.  
0033-1550

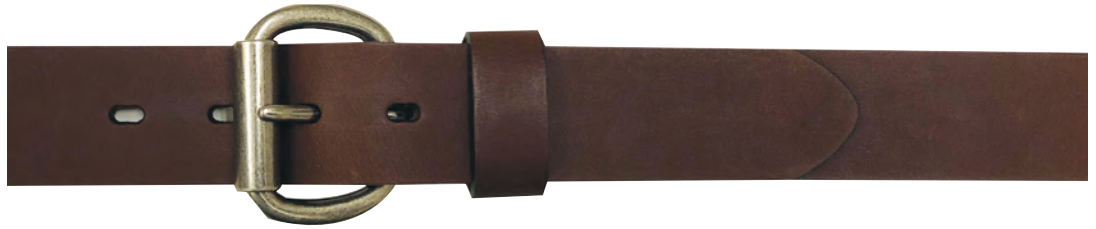




5995610  
 Sz. 46/56  
 -001 Black -200 Brown;  
 38MM Top grain leather, dull  
 nickel finish buckle.  
 0042-0020



7176600  
 Sz. 46/56  
 - 200 Brown, - 001 Black  
 38MM Genuine leather  
 with no stitch,  
 roller buckle in antique  
 nickel finish.  
 0042-0020



# SUSPENDERS



1452000 (46" Length)  
 -001 Black; -250 Khaki; -400 Navy;  
 -600 Red;



1452010 (52" Length)  
 -001 Black -250 Khaki -400 Navy  
 2" Width  
 Terry weave solid elastic, jumbo  
 size nickel finished, clip-ons/  
 adjusters.  
 Plastic Hanger  
 0027-1250 (46")  
 0028-0013 (52")



1478600 (46" Length)  
 -210 Tan;  
 2" Width  
 Solid elastic, jumbo size  
 nickel finished, clip-ons/  
 adjusters.  
 Plastic Hanger  
 0025-1150



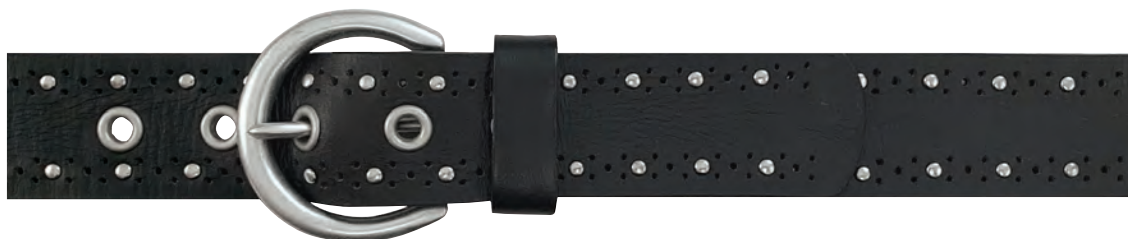
1491100 (46" Length)  
 1491101 (52" Length)  
 -648 Red/White/Blue;  
 2" Width  
 Elastic Patriotic  
 "USA flag print",  
 Nickel finished  
 clip-ons/adjusters.  
 Plastic Hanger  
 0022-0010 (46")  
 0023-1050 (52")



**6504300**

Sz. M/XXL

-001 Black -200 Brown;  
38MM Genuine leather,  
buckle in dull nickel finish.  
0040-0020



**6510310**

Sz. M/XXL

-001 Black -200 Brown;  
30MM Genuine leather,  
floral roller buckle.  
0036-0018



**6559300**

SIZE: M/XXL

- 200 Brown  
38MM Soft pebble genuine  
leather, oval center bar  
buckle in antique silver  
finish.  
0033-1650



S= 28/30 M = 32/34 L = 36/38 XL = 40/42 XXL = 44/46



**6560300**

Sz. M/XXL  
 -127 Oatmeal  
 35MM Heather braided stretch elastic with suede leather tabs, oval center bar buckle in antique brass finish. No point end holes for "Easy Fit"  
 0030-0015



**6563300**

Sz. M/XXL  
 -210 Tan  
 38MM Aztec pattern ribbon on genuine leather, buckle in antique silver finish.  
 0029-1450



**6565300**

SIZE: M/XXL  
 -220 Rust  
 38MM Soft suede with genuine leather lining, buckle in brass antique finish.  
 0029-1450



**9657300**

Sz. S/XXL  
 -221 Rusty  
 38MM Floral embossed bridle leather, oval center bar buckle in antique silver finish.  
 0037-1850



Made in USA



S= 28/30 M = 32/34 L = 36/38 XL = 40/42 XXL = 44/46





# CAMOUFLAGE



**REALTREE™**



### 5600500

Reversible Belt,  
38MM width, canvas  
REALTREE XTRA topside to  
reverse brown leather back,  
stitched edges, reversible  
twist buckle/loop in dull dark  
antique brass finish.  
951 Realtree Xtra/Brown  
Size 28/46  
0033-1550



### 5614500

35MM width,  
REALTREE XTRA canvas  
centre, stitched edges, crazy  
horse leather trim, dull dark  
antique brass finish buckle.  
950 Realtree Xtra  
Size 28/46  
0038-0018



# CAMOUFLAGE - Strata



### 5800500

Reversible belt,  
38MM width,  
canvas True Timber Strata  
topside to reverse brown  
leather back, stitched edges,  
reversible twist buckle/loop  
in dull dark antique brass  
finish.  
394 Strata/Brown  
Size 30/44  
0030-0014



### 5801500

38MM width, canvas True  
Timber  
Strata topside, stitched edges,  
buckle in dull dark antique  
brass finish.  
393 Strata  
Size 28/46  
0027-1250



# CAMOUFLAGE - Kanati



TRUETIMBER  
CAMO



## 5800500

Reversible belt, 38MM width, canvas True Timber Kanati Mini topside to reverse brown leather back, stitched edges, reversible twist buckle/loop in dull dark antique brass finish.  
391 Kanati/Brown  
Size 30/44  
0030-0014



## 5801500

38MM width, canvas True Timber Kanati Mini topside, stitched edges, buckle in dull dark antique brass finish.  
390 Kanati  
Size 28/46  
0027-1250



## 5807500

38MM Multi-color braided stretch elastic with genuine leather tabs, buckle in matte black finish.  
No point end holes for "Easy Fit"

Medium 34/36  
Large 38/40  
X-large 42/44  
-275 Prairie  
0029-1350



## 5808500

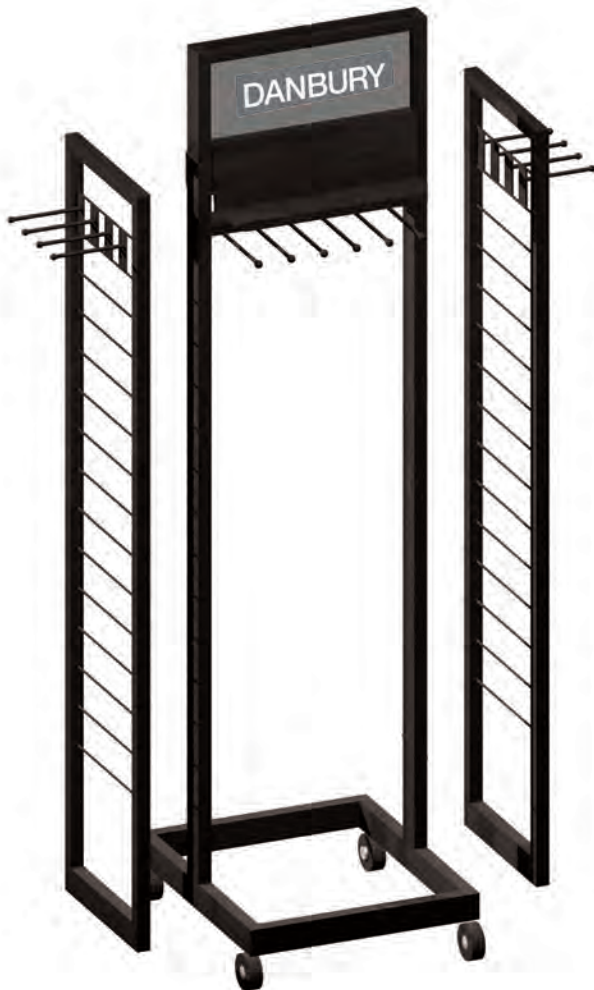
38MM Multi-color braided stretch elastic with genuine leather tabs, buckle in matte black finish.  
No point end holes for "Easy Fit"

Medium 34/36  
Large 38/40  
X-large 42/44  
-365 VSX  
0029-1350

DANBURY



# In-Store Displays



**2555000** Universal accessory display  
12 peg powder coated aluminium display with brand sign bar across top.  
Mobile on 4 casters.  
(display holds up to 120 belts)

**Extra attachments**

**2555100** -1 grid style:  
(holds up to 4 hooks)

**2555200** - 1 grid  
Hook style:  
(6" long & holds up to 10 belts)  
(display w/2 side grids x 8 hooks holds up to 200 belts)  
easy to assemble.  
001 BLACK

**2562000\*\***  
8 Peg Powder coated aluminium display with CUSTOM\* branded sign bar across top  
movable hooks  
display holds up to 80 Belts  
easy to assemble  
001 BLACK

**\*\*Free Metal Display with a 72 piece order!!**

\* Logo artwork required in .ai or .eps format



**2595000 \*\***  
6 Peg Wooden Wall display with CUSTOM\* branded sign bar  
001 BLACK

**\*\*Free Wall Display with a 36 piece order!!**

\* Logo artwork required in .ai or .eps format

FACEBOOK.COM/ GemDandy123

INSTAGRAM.COM/ gemdandy\_accessories



200 West Academy St., Madison, NC 27025 · Ph : 800-334-5101 or 336-548-9624  
Fax : 800-742-3587 customerservice@gem-dandy.com www.gem-dandy.com

Scan to go to our fully operational B2B website.