



PEBBLE BEACH

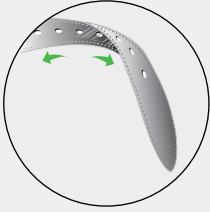
# Belts & Accessories 2024



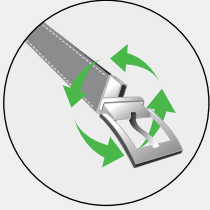
200 West Academy St., Madison, NC 27025 . Ph : 800-334-5101 or 336-548-9624  
customerservice@gem-dandy.com www.gem-dandy.com



# Technology



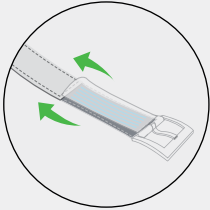
**7 holes :**  
we use 7 holes on point end to ensure a "Better Fit" for all body types.



**Reversible buckle and loop :**  
twist buckle rotates at base to provide two-in-one belt.



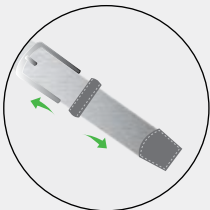
**Ultralight buckle :**  
carved out buckle eliminates extra weight for better comfort.



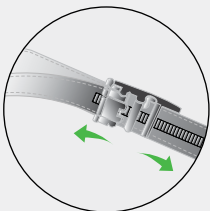
**Easy fit :**  
hidden stretch mechanism under loop allows for "Easy Fit" and increased range of motion.



**Breath-ability / perforation :**  
perforated leather allows air to move through the strap, wicking away moisture from the body on hot days.



**Elastic easy fit :**  
braided stretch elastic with no point end holes allows for "Easy Fit" and increased range of motion.



**Slide mechanism :**  
unique mechanism to ensure "Optimum Fit" for any body type.

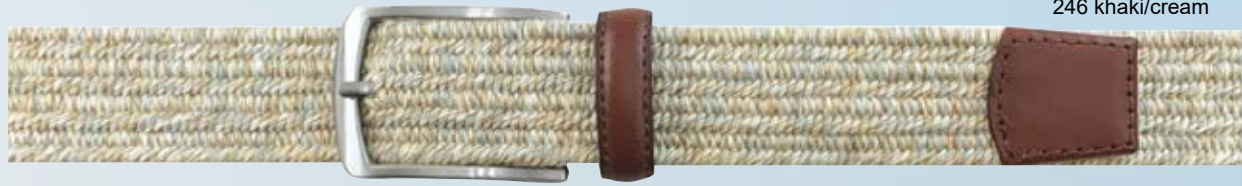




# Performance Belts

## 3319500

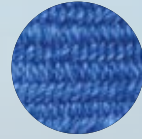
- 35 mm Heather braided stretch elastic
- full grain leather tabs
  - silver finish buckle
  - no point end hole for "Easy Fit"
  - size range 32 / 44
- 0037-1750



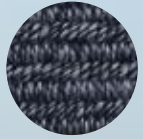
246 khaki/cream



logo detail on tab for rack appeal



417 blue/ dk blue w/black tabs



046 lt gray/dk gray w/black tabs

## 3321500

- 35 mm Solid braided stretch elastic
- full grain leather tabs
  - buckle in silver finish
  - no point end holes for "Easy Fit"
  - size range 32 / 44
- 0032-0015



250 khaki



logo detail for rack appeal



001 black w/tan tabs

## 3361500

- 35 mm Braided stretch elastic with speckled effect
- full grain leather tabs
  - buckle in matt gunmetal finish
  - no point end holes for "Easy Fit"
  - size range 32 / 44
- 0035-1650



493 lt blue/blue/white



logo detail for rack appeal



241 beige/ white/blue



# Ribbon Belts

## 3315500

35 mm Web belt with ribbon overlay

- genuine leather tabs
- silver finish buckle
- 7 point end holes for "Better Fit"
- size range 32 / 44

0037-1750



250 khaki

## 3316500

35 mm Web belt with ribbon overlay

- genuine leather tabs
- silver finish buckle
- 7 point end holes for "Better Fit"
- size range 32 / 44

0039-1850



250 khaki

## 3317500

35 mm Web belt with ribbon overlay

- genuine leather tabs
- silver finish buckle
- 7 point end holes for "Better Fit"
- size range 32 / 44

0039-1850



400 navy



# Ribbon Belts

## 3365500

35 mm Web belt with  
 "Not a Good Day"  
 (golfers/bent clubs)  
 ribbon overlay

- full grain leather tabs
  - silver finish buckle
  - 7 point end holes for "Better Fit"
  - size range 32 / 44
- 0033-1550



400 navy



250 khaki

## 3367500

35 mm Web belt with  
 "Golfer's Drink Choices"  
 (golfer's/ drinks)  
 ribbon overlay

- full grain leather tabs
  - silver finish buckle
  - 7 point end holes for "Better Fit"
  - size range 32 / 44
- 0033-1550



400 navy



250 khaki



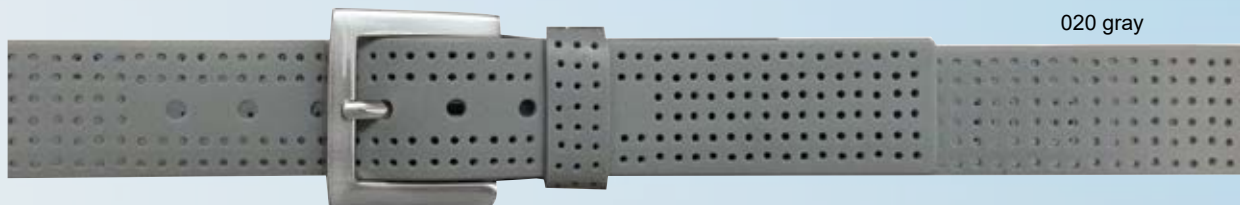
# Performance Belts

## 3301570

38 mm Perforated silicone material

- silver finish buckle
- 7 Point end holes for "Better fit"
- size range 32 /44

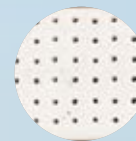
0031-1450



020 gray



001 black



100 white

## 3323500

35 mm Perforated leather

- logo concho on buckle end for rack appeal
- stretch feature under loop for "Easy Fit"
- 7 point end holes for "Better Fit"
- silver finish buckle
- size range 32 /44

0035-1650



020 gray



stretch feature



carved out buckle to eliminate extra weight



001 black



# Embroidered Belts

## 3318500

38 mm Web logo and golf cart repeat

- brown genuine leather tabs
- silver finish buckle
- 7 point end holes for "Better Fit"
- size range 32 / 44

0032-0015



250 khaki



400 navy

# Reversible Belts

## 3324500

35 mm Reversible pebble grain genuine leather

- silver finish buckle
- logo on fixed metal piece
- 7 point end holes for "Better Fit"
- size range 32 / 44

0037-1750



030 gray/white



logo detail for rack appeal

# Dress Belts

## 3328500

35 mm Web belt,

- genuine leather tabs
- 5 silver conchos with logo
- silver finish buckle
- 7 point end holes for "Better Fit"
- size range 32 / 44

0037-1750



903 brown/khaki



logo detail

## 3329500

35 mm Genuine leather

- 4 silver finish conchos with logo
- silver finish buckle/loop
- 7 point end holes for "Better Fit"
- size range 32 / 44

0039-1850



001 black



logo detail





**Gem-Dandy Accessories** is one of the country's leading belt and accessory companies servicing retailers across the globe since 1921. We are proud to have celebrated our 100th year anniversary in 2021, thanking all customers who stood by us during this past century. We do appreciate your loyalty through the years.

Our product lines include a wide variety of belts, wallets, suspenders, socks, gift sets and other accessories made from the finest quality materials with superior workmanship. Our centralized product development and supply system, along with a dedicated customer service and committed sales team provide a competitive edge to our retailers.

Address orders to :  
Gem-Dandy Accessories, 200 W Academy St  
PO Box 657, Madison, NC 27025  
Phone : 800-334-5101 or 336-548-9624  
[www.gem-dandy.com](http://www.gem-dandy.com)  
email : [customerservice@gem-dandy.com](mailto:customerservice@gem-dandy.com)



Scan to go to our fully operational B2B website.



**PEBBLE BEACH**

Pebble Beach image and logo designs are trademark of Pebble Beach Company and are used under license to SWC, Inc. / Dynamic Design Enterprise, Inc.

[FACEBOOK.COM/ GemDandy123](https://www.facebook.com/GemDandy123)



[INSTAGRAM.COM/ gemdandy\\_accessories](https://www.instagram.com/gemdandy_accessories)

